



# EVENTS

AT MELBOURNE SKYDECK



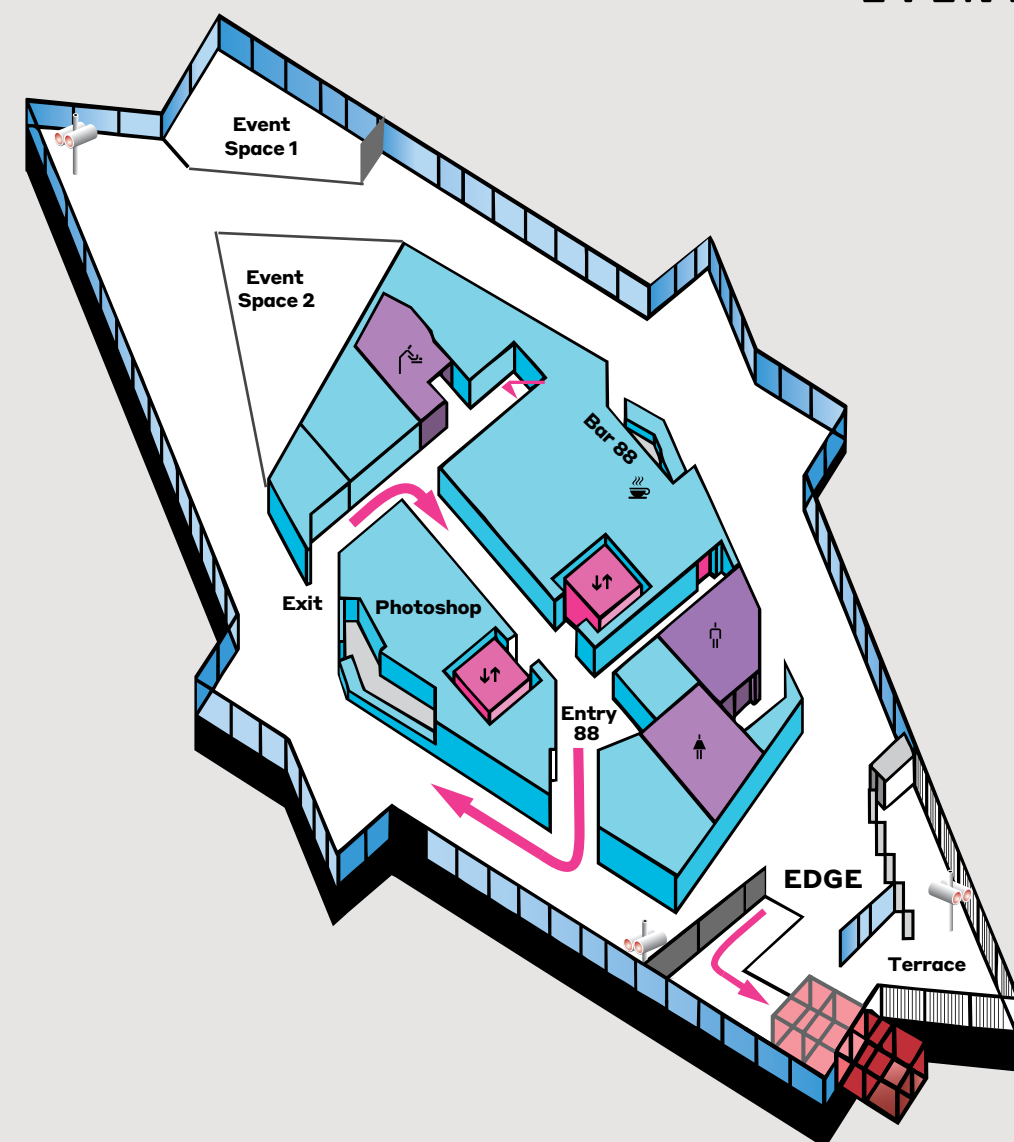




## EVENTS AT MELBOURNE SYDECK

A unique event space situated 300m above Melbourne. Melbourne Skydeck offers a unique and elevated event space. Situated on the 88th floor of the iconic Eureka Tower, it provides breathtaking 360-degree views of the city skyline, and surrounding landscapes. Whether you're celebrating a corporate event, social celebration, special event, or simply looking for a team unique get-together, our venue is the perfect setting for creating lasting memories. Day or night, the Melbourne Skydeck promises an extraordinary experience with the city as your backdrop.

### EVENTS SPACE









# PACKAGES

## COCKTAIL PACKAGES

Guests will have exclusive access to our private area during the event, with the option to stay within the space or explore the observation deck, all while enjoying the stunning scenery.

To ensure a seamless and enjoyable experience for all guests, the maximum event duration at our venue is limited to 3 hours. This time frame allows us to provide the highest quality service and the best atmosphere for your event.

### ALCOHOLIC BEVERAGE PACKAGE - FROM \$45PP\*

This package includes access to the observation deck, an exclusive event space, and a dedicated host. A beverage package with beer, wine, and soft drinks, all served directly from the event space.

OR

### BAR TAB PACKAGE - FROM \$22PP\*

This package includes access to the observation deck, exclusive event space and a predetermined bar tab including beer, wine, and soft drinks. Upon request, you can also add a selection of spirits, cocktails, and champagne. Drinks are served from Bar 88, conveniently located near the event space.

OR

### NON-ALCOHOLIC BEVERAGE PACKAGE - FROM \$35PP\*

This package includes access to the observation deck, an exclusive event space, and a dedicated event host. Non-alcoholic beverages, including soft drinks, juice, tea, and coffee, will be served from Bar 88, conveniently located near the event space.

*\*There is a minimum spend requirement for food, beverages, and experiences. To include food and experiences, a beverage or bar tab package must be selected. From price is based on a 1-hour event duration.*



# FOOD & BEVERAGE

## FOOD

### CANAPÈS

- Canapès (selection of 3) \$20pp
- Canapès (selection of 6) \$40pp
- Canapès (selection of 9) \$60pp

### COLD CANAPÈS

- White bean hummus & curried pumpkin tartlette *v*
- Citrus cured kingfish, sweet ginger, avruga *gf*
- Lamb backstrap, bean tapenade, olive *df*

### HOT CANAPÈS

- Mushroom & aged Comte arancini, garlic mayo *v, gf*
- Lamb shank pie, rosemary, tomato jam
- Short rib & chervil croquette, chipotle mayo *gf*
- Lemongrass chicken pancake, soy, chilli dip
- Beef skewer, gribiche sauce, pickled shallots *gf*
- Curried vegetable samosa, yoghurt, coriander raita *v*

### DESSERT CANAPÈS

- Cinnamon doughnut, raspberry curd
- Homemade brownie, candied orange cremeux

### MORE SUBSTANTIAL ITEMS

- add \$12 per person, per item
- Master stock glazed duck baby bao, daikon radish kimchi *df*
- Butternut pumpkin gnocchi, cheese emulsion, mascarpone *v*
- Southern ranges beef burger, pickled beetroot, seeded mustard
- Rockling tempura tortilla, iceberg, tartare sauce *df*

### PLATTERS - \$100 EACH

- (serves approximately 10 guests, minimum order of 2 per platter type)
- Cheese and Charcuterie
- Seasonal Fruit

### SIDES - \$15 EACH

- Bowl of Chips



## BEVERAGES

### WINE & SPARKLING

- Malvern Park Sauvignon Blanc
- The Drives Shiraz
- Peg and Gus Premium Prosecco

### BEER

- Asahi Super Dry
- Peroni Red
- Cider

### NON-ALCOHOLIC

- Coca-Cola / Coca-Cola No Sugar / Sprite
- Tea / Coffee / Juice

### UPGRADES

- Additional 1 Hour Beverage Package \$10pp
- Signature Cocktail \$18 each
- Mocktails \$10 each

### BAR TAB PACKAGE

Guests can select their preferred beverages from our extensive menu, including a variety of wines, beers, spirits, and non-alcoholic options. Alternatively, you have the choice of included beverages. Once the tab reaches the limit, you can choose to extend it or switch to a cash bar.

*Food and Beverage selection subject to availability and may change at any time.*





# PACKAGES

## EXPERIENCES

### VOYAGER THEATRE - VR EXPERIENCE

The first of its kind in the Southern Hemisphere and largest of its kind in the world, the award-winning Voyager Theatre takes you on an immersive virtual journey around 16 iconic Melbourne and Victorian experiences. From feeling the thrill of riding Luna Park's rollercoaster, to the thunderous crowd at the MCG you'll be amazed by the 360-degree cinematic and sensory voyage in 6D, Super 8K high-definition and scent sensations.

**Duration:** 15 minutes for groups up to 20

**Includes:** Virtual Reality experience

*\$15 per person*

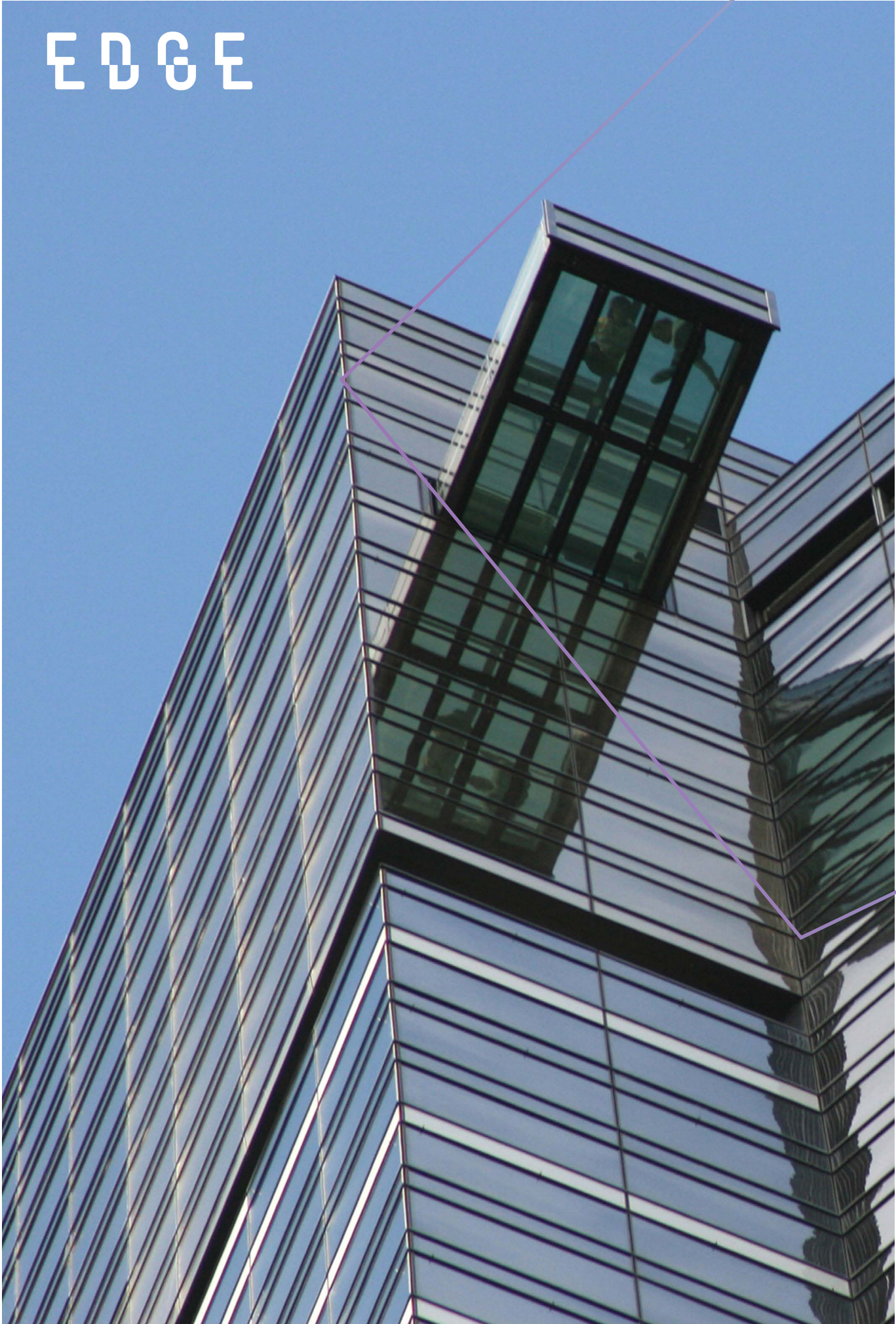
### EDGE EXPERIENCE

A world-first, Edge suspends daring guests in a transparent glass cube that projects out from the Skydeck, leaving you suspended nearly 300 metres above the streets of Southbank. Capture this moment with an Edge photo, a fantastic memento of a memorable evening at the highest viewing platform in the southern hemisphere.

**Duration:** 6 minutes per group of 12

**Includes:** Edge Experience & digital photo of group

*\$15 per person*





# FAQS

## WHAT EVENT TIMES CAN I CHOOSE FROM?

**Afternoon events:** Earliest start time is 12:00 pm; latest finish time is 4:00 pm.

**Evening events:** Earliest start time is 6:00 pm; latest finish time is 9:00 pm or 10:00 pm (seasonal hours).

Morning events are available upon request; please speak to our Event Coordinator.

## HOW DO WE GET UP TO THE 88TH FLOOR?

The Melbourne Skydeck entrance is located on the ground floor, opposite the palm trees. Event organisers and guests can enter through the main front entrance. Our team will guide you to the lifts from there.

## CAN WE HIRE OUT A SPACE AND BRING IN EXTERNAL CATERERS?

We provide in-house food and beverages to fully cater for your event, so external caterers are not allowed, except for strict kosher requirements.

## AT WHAT TIME CAN WE BUMP-IN?

You have up to 30 minutes of complimentary bump-in time before your event starts. If additional setup time is required, fees may apply.

## DO YOU CATER FOR DIETARY REQUIREMENTS?

Our chefs can accommodate all dietary requirements and allergy substitutions if advised a week prior to the event. You won't need to select different menu items for guests with dietary needs. Please consult with one of our Event Coordinators for further assistance.

## CAN EXPERIENCES BE ADDED TO OUR EVENT?

Yes, the VR Theatre and or Edge experience can be added. Please let your Event Coordinator know for further assistance.

## CAN WE HAVE CANDLES IN THE SPACE?

For the safety of our guests, team, and residents, candles, sparklers, and open flames are not permitted due to the sensitivity of our smoke alarms.

## WHAT ARE THE PARKING ARRANGEMENTS AND DIRECTIONS?

The Wilson Eureka Car Park is our preferred partner for parking, located at the base of Eureka Tower, accessed from the corner of City Road and Southgate Avenue. To qualify for preferred visitor rates, validate your parking ticket with our team on the ground floor upon arrival or departure. Please do not use your credit card at entry, as discounts only apply to tickets paid upon exiting Wilson Parking.

- Monday to Friday (entry before 4.00 pm): \$13\*
- Monday to Friday (entry after 4.00 pm): \$6\*
- Saturday, Sunday & Public Holidays: \$6\*  
(\*Parking rates are subject to change. Discounted rates apply only to Wilson Eureka Car Park.)

*Please note that Wilson Eureka Car Park is owned and managed by Wilson Parking, and Melbourne Skydeck does not have reserved parking, so availability may vary.*

## CAN I HAVE A DJ OR LIVE PERFORMER FOR MY EVENT?

Unfortunately, as the observation deck is a shared space, we do not allow DJs or live performers. Instead, background music is played throughout the area for everyone's enjoyment.

## DO I NEED TO SELECT A BEVERAGE PACKAGE, OR CAN WE CHOOSE BEVERAGES ON CONSUMPTION?

All events are required to use our beverage packages or bar tab package for the duration of your event.

## DO YOU ALLOW BYO ALCOHOL?

Unfortunately, BYO alcohol is not permitted. If you have specific drink requests, please check with your Event Coordinator.

## IS THE VENUE ACCESSIBLE?

Yes, Melbourne Skydeck is wheelchair accessible, with accessible toilets located on both the ground floor and level 88.

## IS THERE A DRESS CODE?

Guests are required to wear neat, casual attire. Clothing with offensive language is not permitted.

## DO YOU ALLOW UNDERAGE GUESTS TO PRIVATE EVENTS?

Yes, there are no age restrictions for private events. Please inform your Event Coordinator about the number of children attending, as well as any related requirements.

## DO YOU OFFER A CHILDREN'S MEAL?

Please consult with our Event Coordinator for available options.

## CAN YOU PLACE A DATE ON HOLD? WHAT DEPOSIT IS REQUIRED?

Yes, you can hold a date for up to 5 days or until another client shows interest. To confirm your booking, a deposit of 50% of the minimum spend is required.





**Melbourne Skydeck**

**(03) 9693 8888 | [events@melbourneskydeck.com.au](mailto:events@melbourneskydeck.com.au) | [melbourneskydeck.com.au](http://melbourneskydeck.com.au)**

*Melbourne Skydeck All information & prices are correct at time of Publication (May 2024)  
and subject to change without notice.*

**For the latest [Terms and Conditions](#)**